

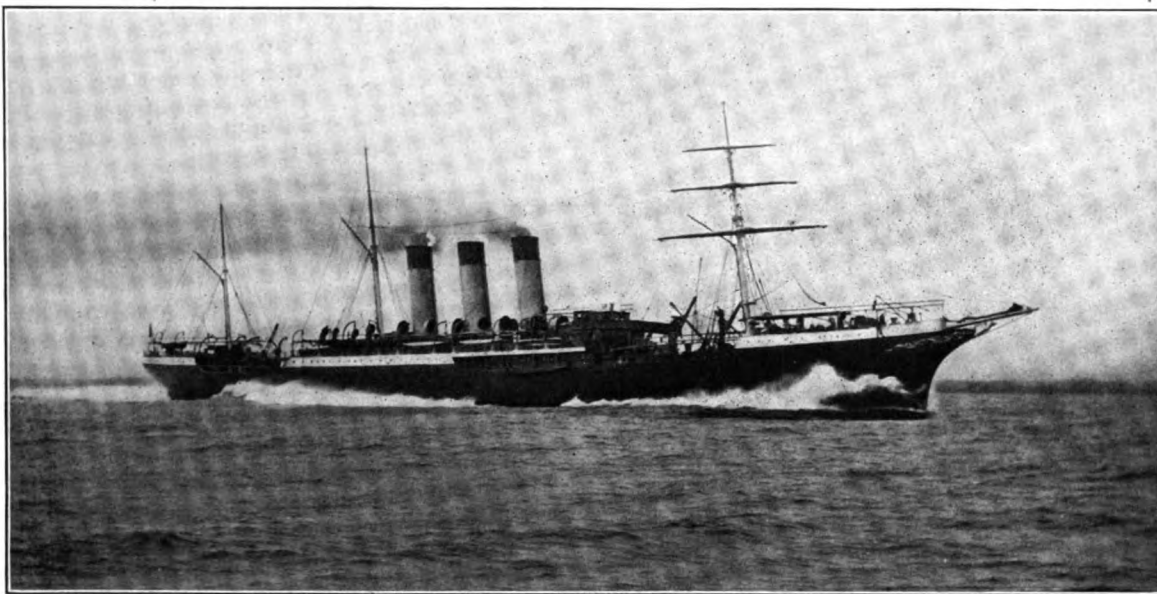
RUSSIAN VOLUNTEER FLEET STEAMERS.

BY FRANK C. PERKINS.

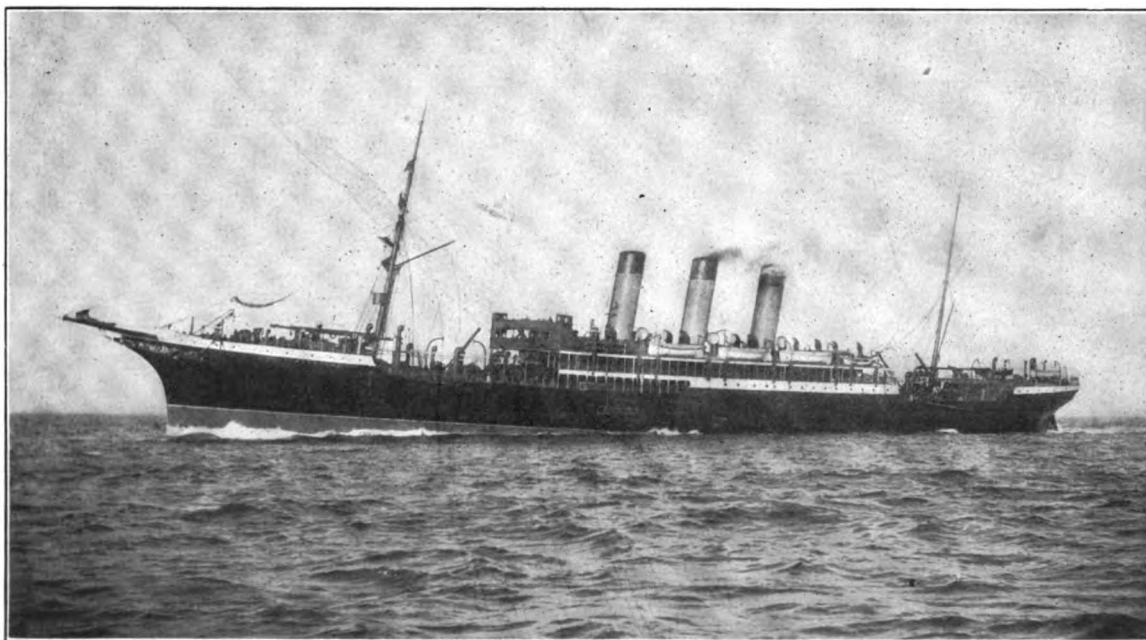
A number of the Russian volunteer fleet steamers have been constructed in English shipyards, and it may be of interest to note some of the details of construction of the two vessels *Kherson* and *Smolensk*, recently completed at the Hebburn shipbuilding yard of R & W. Hawthorn, Leslie & Company, Limited, of Hebburn-on-Tyne.

der measures 36 inches in diameter, the low-pressure cylinder 92 inches, and the intermediate 57 inches. The steam is supplied from 24 Belleville boilers working at a pressure of 250 pounds per square inch. This fleet steamer has attained, on trial, a speed of 19.5 knots.

The twin-screw transport steamer *Smolensk* was originally designed for trade between Russia and the far east, in time of peace carrying cargo and immigrants, and in time of war being used as a fast cruiser. The total length of the *Smolensk* is 506 feet over



KHERSON.



SMOLENSK.

The Russian volunteer fleet steamer *Kherson* is of the twin-screw type, having a length over all of 493 feet. The molded depth of this steamer is 37 feet 3 inches, while the breadth is 54 feet 3 inches. She is fitted with accommodations for 1,480 troops and 72 officers or first-class passengers, and 46 third-class passengers. Provision is made for the mounting of seven 4.7-inch guns. The main engines consist of two sets of the triple-expansion type, having a stroke of 54 inches. The high-pressure cylin-

all, the depth being 37 feet, and the breadth 58 feet. This vessel is fitted up with cabin accommodations for 1,560 troops and 86 officers, and provision is made on her decks for 18 quick-firing guns and for 10 ammunition magazines on the orlop-deck with steel trunkway leading thereto from the upper deck. She is fitted with electric-fan ventilation throughout; also large steam bread oven, disinfecting plant, and cold-storage rooms, as well as steam laundry, four galleys, and two hospitals. Her water-tight bulk-

